



Certificate of Analysis

QA SAMPLE - INFORMATIONAL ONLY

1 of 3

ICAL ID: 20231110-056
Sample: CA231110-033-109
Garlic Runtz
Strain: Garlic Runtz
Category: Plant
Type: Flower - Cured

Urb
Lic. #
5511 95th Ave, Kenosha, WI, 53144
Kenosha, WI 53144
Lic. #

Batch#: 245-2
Batch Size Collected:
Total Batch Size:
Collected: 11/14/2023; Received: 11/14/2023
Completed: 11/14/2023

Moisture 8.7% Water Activity NT	Total THC 23.03%	Total CBD 0.05%	Total Cannabinoids 24.62%	Total Terpenes NT
--	----------------------------	---------------------------	-------------------------------------	-----------------------------

Summary	SOP Used	Date Tested	Complete Complete
Batch Cannabinoids Moisture	POT-PREP-003 High MOISTURE-001	11/13/2023 11/13/2023	8.7%



Scan to see results

Cannabinoid Profile

Analyte	LOQ (mg/g)	LOD (mg/g)	%	mg/g	Analyte	LOQ (mg/g)	LOD (mg/g)	%	mg/g
THCa	0.3039	0.1013	26.02	260.2	CBGa	0.2948	0.0983	1.69	16.9
Δ9-THC	0.2210	0.0737	0.21	2.1	CBG	0.1890	0.0630	0.06	0.6
Δ8-THC	0.1343	0.0448	ND	ND	CBN	0.1890	0.0630	ND	ND
THCV	0.1021	0.0340	ND	ND	Total THC			23.03	230.25
CBDa	0.3993	0.1331	0.06	0.6	Total CBD			0.05	0.52
CBD	0.1674	0.0558	ND	ND	Total			24.62	246.15
CBDV	0.1327	0.0442	ND	ND					
CBC	0.5463	0.1821	ND	ND					

Total THC=THCa * 0.877 + d9-THC + d8-THC; Total CBD = CBDa * 0.877 + CBD. LOD= Limit of Detection, LOQ= Limit of Quantitation, ND= Not Detected, NR= Not Reported. Potency is reported on a dry weight basis. Instrumentation and analysis SOPs used: Cannabinoids:UHPLC-DAD(POT-INST-005),Moisture:Moisture Analyzer(MOISTURE-001),Water Activity:Water Activity Meter(WA-INST-002), Foreign Material:Microscope(FOREIGN-001). Density measured at 19-24 °C, Water Activity measured at 0-90% RH. All QA submitted by the client, All CA State Compliance sampled using SAMPL-SOP-001.

Terpene Profile

Analyte	LOQ (mg/g)	LOD (mg/g)	%	mg/g	Analyte	LOQ (mg/g)	LOD (mg/g)	%	mg/g
---------	------------	------------	---	------	---------	------------	------------	---	------

NR= Not Reported (no analysis was performed), ND= Not Detected (the concentration is less than the Limit of Detection (LOD)). Analytical instrumentation used: HS-GC-MS; samples analyzed according to SOP TERP-INST-003.



Infinite Chemical Analysis Labs
8312 Miramar Mall
San Diego, CA
(858) 623-2740
www.infiniteCAL.com
Lic# C8-000047-LIC

Josh M Swider
Josh Swider
Lab Director, Managing Partner
11/14/2023

Confident Cannabis
All Rights Reserved
support@confidentcannabis.com
(866) 506-5866
www.confidentcannabis.com



This product has been tested by Infinite Chemical Analysis, LLC using valid testing methodologies and a quality system as required by state law. All LQC samples were performed and met the prescribed acceptance criteria in 16 CCR section 15730, pursuant to 16 CCR section 15726(e)(13). Values reported relate only to the product tested. Infinite Chemical Analysis, LLC makes no claims as to the efficacy, safety or other risks associated with any detected or non-detected levels of any compounds reported herein. This Certificate shall not be reproduced except in full, without the written approval of Infinite Chemical Analysis, LLC.



Certificate of Analysis

QA SAMPLE - INFORMATIONAL ONLY

2 of 3

ICAL ID: 20231110-056
Sample: CA231110-033-109
Garlic Runtz
Strain: Garlic Runtz
Category: Plant
Type: Flower - Cured

Urb
Lic. #
5511 95th Ave, Kenosha, WI, 53144
Kenosha, WI 53144
Lic. #

Batch#: 245-2
Batch Size Collected:
Total Batch Size:
Collected: 11/14/2023; Received: 11/14/2023
Completed: 11/14/2023

Residual Solvent Analysis

Category 1	LOQ	LOD	Limit	Status	Category 2	LOQ	LOD	Limit	Status	Category 2	LOQ	LOD	Limit	Status
------------	-----	-----	-------	--------	------------	-----	-----	-------	--------	------------	-----	-----	-------	--------

NR= Not Reported (no analysis was performed), ND= Not Detected (the concentration is less then the Limit of Detection (LOD)). Analytical instrumentation used: HS-GC-MS; samples analyzed according to SOP RS-INST-003.

Heavy Metal Screening

LOQ	LOD	Limit	Status
-----	-----	-------	--------

NR= Not Reported (no analysis was performed), ND= Not Detected (the concentration is less then the Limit of Detection (LOD)). Analytical instrumentation used: ICP-MS; samples analyzed according to SOP HM-INST-003.

Microbiological Screening

Limit	Result	Status
-------	--------	--------

ND=Not Detected. Analytical instrumentation used:qPCR; samples analyzed according to SOP MICRO-INST-001.



Infinite Chemical Analysis Labs
8312 Miramar Mall
San Diego, CA
(858) 623-2740
www.infiniteCAL.com
Lic# C8-0000047-LIC

Josh M Swider

Josh Swider
Lab Director, Managing Partner
11/14/2023

Confident Cannabis
All Rights Reserved
support@confidentcannabis.com
(866) 506-5866
www.confidentcannabis.com



This product has been tested by Infinite Chemical Analysis, LLC using valid testing methodologies and a quality system as required by state law. All LQC samples were performed and met the prescribed acceptance criteria in 16 CCR section 15730, pursuant to 16 CCR section 15726(e)(13). Values reported relate only to the product tested. Infinite Chemical Analysis, LLC makes no claims as to the efficacy, safety or other risks associated with any detected or non-detected levels of any compounds reported herein. This Certificate shall not be reproduced except in full, without the written approval of Infinite Chemical Analysis, LLC.



Certificate of Analysis

QA SAMPLE - INFORMATIONAL ONLY

3 of 3

ICAL ID: 20231110-056
Sample: CA231110-033-109
Garlic Runtz
Strain: Garlic Runtz
Category: Plant
Type: Flower - Cured

Urb
Lic. #
5511 95th Ave, Kenosha, WI, 53144
Kenosha, WI 53144
Lic. #

Batch#: 245-2
Batch Size Collected:
Total Batch Size:
Collected: 11/14/2023; Received: 11/14/2023
Completed: 11/14/2023

Chemical Residue Screening

Category 1	LOQ	LOD	Status	Mycotoxins	LOQ	LOD	Limit	Status
------------	-----	-----	--------	------------	-----	-----	-------	--------

Category 2	LOQ	LOD	Limit	Status	Category 2	LOQ	LOD	Limit	Status
------------	-----	-----	-------	--------	------------	-----	-----	-------	--------

Other Analyte(s):

NR= Not Reported (no analysis was performed), ND= Not Detected (the concentration is less than the Limit of Detection (LOD)). Analytical instrumentation used: LC-MS-MS & GC-MS-MS; samples analyzed according to SOPs PESTMYCO-LC-INST-004 and PEST-GC-INST-003.



Infinite Chemical Analysis Labs
8312 Miramar Mall
San Diego, CA
(858) 623-2740
www.infiniteCAL.com
Lic# C8-0000047-LIC

Josh M Swider

Josh Swider
Lab Director, Managing Partner
11/14/2023

Confident Cannabis
All Rights Reserved
support@confidentcannabis.com
(866) 506-5866
www.confidentcannabis.com



This product has been tested by Infinite Chemical Analysis, LLC using valid testing methodologies and a quality system as required by state law. All LQC samples were performed and met the prescribed acceptance criteria in 16 CCR section 15730, pursuant to 16 CCR section 15726(e)(13). Values reported relate only to the product tested. Infinite Chemical Analysis, LLC makes no claims as to the efficacy, safety or other risks associated with any detected or non-detected levels of any compounds reported herein. This Certificate shall not be reproduced except in full, without the written approval of Infinite Chemical Analysis, LLC.



Certificate of Analysis

QA SAMPLE - INFORMATIONAL ONLY

1 of 3

ICAL ID: 20231127-047
Sample: CA231127-017-061
joker
Strain: joker
Category: Plant
Type: Flower - Cured

Cabo Ella Group
Lic. #
2205 Faraday Ave
Carlsbad, CA 92008
Lic. #

Batch#: 00021
Batch Size Collected:
Total Batch Size:
Collected: 11/28/2023; Received: 11/28/2023
Completed: 11/28/2023

Moisture 8.7% Water Activity NT	Total THC 18.38%	Total CBD 0.04%	Total Cannabinoids 19.03%	Total Terpenes NT
---	----------------------------	---------------------------	-------------------------------------	----------------------

Summary	SOP Used	Date Tested	Complete
Batch	POT-PREP-003	11/28/2023	Complete
Cannabinoids	MOISTURE-001	11/28/2023	8.7%
Moisture			



Scan to see results

Cannabinoid Profile

Analyte	LOQ (mg/g)	LOD (mg/g)	%	mg/g	Analyte	LOQ (mg/g)	LOD (mg/g)	%	mg/g
THCa	0.1076	0.0359	20.60	206.0	CBGa	0.1044	0.0348	0.60	6.0
Δ9-THC	0.0978	0.0261	0.32	3.2	CBG	0.0978	0.0223	0.08	0.8
Δ8-THC	0.0978	0.0158	ND	ND	CBN	0.0978	0.0223	ND	ND
THCV	0.0978	0.0121	ND	ND	Total THC			18.38	183.85
CBDa	0.1414	0.0471	0.05	0.5	Total CBD			0.04	0.40
CBD	0.0978	0.0198	ND	ND	Total			19.03	190.29
CBDV	0.0978	0.0157	ND	ND					
CBC	0.1935	0.0645	ND	ND					

Total THC=THCa * 0.877 + d9-THC + d8-THC; Total CBD = CBDa * 0.877 + CBD. LOD= Limit of Detection, LOQ= Limit of Quantitation, ND= Not Detected, NR= Not Reported. Potency is reported on a dry weight basis. Instrumentation and analysis SOPs used: Cannabinoids:UHPLC-DAD(POT-INST-005),Moisture:Moisture Analyzer(MOISTURE-001),Water Activity:Water Activity Meter(WA-INST-002), Foreign Material:Microscope(FOREIGN-001). Density measured at 19-24 °C, Water Activity measured at 0-90% RH. All QA submitted by the client, All CA State Compliance sampled using SAMPL-SOP-001.

Terpene Profile

Analyte	LOQ (mg/g)	LOD (mg/g)	%	mg/g	Analyte	LOQ (mg/g)	LOD (mg/g)	%	mg/g
---------	------------	------------	---	------	---------	------------	------------	---	------

NR= Not Reported (no analysis was performed), ND= Not Detected (the concentration is less than the Limit of Detection (LOD)). Analytical instrumentation used: HS-GC-MS; samples analyzed according to SOP TERP-INST-003.



Infinite Chemical Analysis Labs
8312 Miramar Mall
San Diego, CA
(858) 623-2740
www.infiniteCAL.com
Lic# C8-000047-LIC

Josh M Swider
Josh Swider
Lab Director, Managing Partner
11/28/2023

Confident LIMS
All Rights Reserved
coa.support@confidentlims.com
(866) 506-5866
www.confidentlims.com



This product has been tested by Infinite Chemical Analysis, LLC using valid testing methodologies and a quality system as required by state law. All LQC samples were performed and met the prescribed acceptance criteria in 16 CCR section 15730, pursuant to 16 CCR section 15726(e)(13). Values reported relate only to the product tested. Infinite Chemical Analysis, LLC makes no claims as to the efficacy, safety or other risks associated with any detected or non-detected levels of any compounds reported herein. This Certificate shall not be reproduced except in full, without the written approval of Infinite Chemical Analysis, LLC.



Certificate of Analysis

QA SAMPLE - INFORMATIONAL ONLY

2 of 3

ICAL ID: 20231127-047
Sample: CA231127-017-061
joker
Strain: joker
Category: Plant
Type: Flower - Cured

Cabo Ella Group
Lic. #
2205 Faraday Ave
Carlsbad, CA 92008
Lic. #

Batch#: 00021
Batch Size Collected:
Total Batch Size:
Collected: 11/28/2023; Received: 11/28/2023
Completed: 11/28/2023

Residual Solvent Analysis

Category 1	LOQ	LOD	Limit	Status	Category 2	LOQ	LOD	Limit	Status	Category 2	LOQ	LOD	Limit	Status
------------	-----	-----	-------	--------	------------	-----	-----	-------	--------	------------	-----	-----	-------	--------

NR= Not Reported (no analysis was performed), ND= Not Detected (the concentration is less then the Limit of Detection (LOD)). Analytical instrumentation used: HS-GC-MS; samples analyzed according to SOP RS-INST-003.

Heavy Metal Screening

	LOQ	LOD	Limit	Status
--	-----	-----	-------	--------

NR= Not Reported (no analysis was performed), ND= Not Detected (the concentration is less then the Limit of Detection (LOD)). Analytical instrumentation used: ICP-MS; samples analyzed according to SOP HM-INST-003.

Microbiological Screening

	Limit	Result	Status
--	-------	--------	--------

ND=Not Detected. Analytical instrumentation used:qPCR; samples analyzed according to SOP MICRO-INST-001.



Infinite Chemical Analysis Labs
8312 Miramar Mall
San Diego, CA
(858) 623-2740
www.infiniteCAL.com
Lic# C8-000047-LIC

Josh M Swider

Josh Swider
Lab Director, Managing Partner
11/28/2023

Confident LIMS
All Rights Reserved
coa.support@confidentlims.com
(866) 506-5866
www.confidentlims.com



This product has been tested by Infinite Chemical Analysis, LLC using valid testing methodologies and a quality system as required by state law. All LQC samples were performed and met the prescribed acceptance criteria in 16 CCR section 15730, pursuant to 16 CCR section 15726(e)(13). Values reported relate only to the product tested. Infinite Chemical Analysis, LLC makes no claims as to the efficacy, safety or other risks associated with any detected or non-detected levels of any compounds reported herein. This Certificate shall not be reproduced except in full, without the written approval of Infinite Chemical Analysis, LLC.



Certificate of Analysis

QA SAMPLE - INFORMATIONAL ONLY

3 of 3

ICAL ID: 20231127-047
Sample: CA231127-017-061
joker
Strain: joker
Category: Plant
Type: Flower - Cured

Cabo Ella Group
Lic. #
2205 Faraday Ave
Carlsbad, CA 92008
Lic. #

Batch#: 00021
Batch Size Collected:
Total Batch Size:
Collected: 11/28/2023; Received: 11/28/2023
Completed: 11/28/2023

Chemical Residue Screening

Category 1	LOQ	LOD	Status	Mycotoxins	LOQ	LOD	Limit	Status
------------	-----	-----	--------	------------	-----	-----	-------	--------

Category 2	LOQ	LOD	Limit	Status	Category 2	LOQ	LOD	Limit	Status
------------	-----	-----	-------	--------	------------	-----	-----	-------	--------

Other Analyte(s):

NR= Not Reported (no analysis was performed), ND= Not Detected (the concentration is less than the Limit of Detection (LOD)). Analytical instrumentation used: LC-MS-MS & GC-MS-MS; samples analyzed according to SOPs PESTMYCO-LC-INST-004 and PEST-GC-INST-003.



Infinite Chemical Analysis Labs
8312 Miramar Mall
San Diego, CA
(858) 623-2740
www.infiniteCAL.com
Lic# C8-000047-LIC

Josh M Swider

Josh Swider
Lab Director, Managing Partner
11/28/2023

Confident LIMS
All Rights Reserved
coa.support@confidentlims.com
(866) 506-5866
www.confidentlims.com



This product has been tested by Infinite Chemical Analysis, LLC using valid testing methodologies and a quality system as required by state law. All LQC samples were performed and met the prescribed acceptance criteria in 16 CCR section 15730, pursuant to 16 CCR section 15726(e)(13). Values reported relate only to the product tested. Infinite Chemical Analysis, LLC makes no claims as to the efficacy, safety or other risks associated with any detected or non-detected levels of any compounds reported herein. This Certificate shall not be reproduced except in full, without the written approval of Infinite Chemical Analysis, LLC.



Certificate of Analysis

QA SAMPLE - INFORMATIONAL ONLY

1 of 3

ICAL ID: 20231110-057
Sample: CA231110-033-110
Trop Cherry
Strain: Trop Cherry
Category: Plant
Type: Flower - Cured

Urb
Lic. #
5511 95th Ave, Kenosha, WI, 53144
Kenosha, WI 53144
Lic. #

Batch#: 233-3
Batch Size Collected:
Total Batch Size:
Collected: 11/14/2023; Received: 11/14/2023
Completed: 11/14/2023

Moisture 9.6% Water Activity NT	Total THC 18.71%	Total CBD 0.04%	Total Cannabinoids 19.51%	Total Terpenes NT
---	----------------------------	---------------------------	-------------------------------------	----------------------

Summary	SOP Used	Date Tested	Complete
Batch	POT-PREP-003 High	11/13/2023	Complete
Cannabinoids	MOISTURE-001	11/13/2023	9.6%
Moisture			



Scan to see results

Cannabinoid Profile

Analyte	LOQ (mg/g)	LOD (mg/g)	%	mg/g	Analyte	LOQ (mg/g)	LOD (mg/g)	%	mg/g
THCa	0.3039	0.1013	21.11	211.1	CBGa	0.2948	0.0983	0.78	7.8
Δ9-THC	0.2210	0.0737	0.19	1.9	CBG	0.1890	0.0630	0.08	0.8
Δ8-THC	0.1343	0.0448	ND	ND	CBN	0.1890	0.0630	ND	ND
THCV	0.1021	0.0340	ND	ND	Total THC			18.71	187.06
CBDa	0.3993	0.1331	0.05	0.5	Total CBD			0.04	0.43
CBD	0.1674	0.0558	ND	ND	Total			19.51	195.13
CBDV	0.1327	0.0442	ND	ND					
CBC	0.5463	0.1821	ND	ND					

Total THC=THCa * 0.877 + d9-THC + d8-THC + d8-THC; Total CBD = CBDa * 0.877 + CBD. LOD= Limit of Detection, LOQ= Limit of Quantitation, ND= Not Detected, NR= Not Reported. Potency is reported on a dry weight basis. Instrumentation and analysis SOPs used: Cannabinoids:UHPLC-DAD(POT-INST-005),Moisture:Moisture Analyzer(MOISTURE-001),Water Activity:Water Activity Meter(WA-INST-002), Foreign Material:Microscope(FOREIGN-001). Density measured at 19-24 °C, Water Activity measured at 0-90% RH. All QA submitted by the client, All CA State Compliance sampled using SAMPL-SOP-001.

Terpene Profile

Analyte	LOQ (mg/g)	LOD (mg/g)	%	mg/g	Analyte	LOQ (mg/g)	LOD (mg/g)	%	mg/g
---------	------------	------------	---	------	---------	------------	------------	---	------

NR= Not Reported (no analysis was performed), ND= Not Detected (the concentration is less than the Limit of Detection (LOD)). Analytical instrumentation used: HS-GC-MS; samples analyzed according to SOP TERP-INST-003.



Infinite Chemical Analysis Labs
8312 Miramar Mall
San Diego, CA
(858) 623-2740
www.infiniteCAL.com
Lic# C8-000047-LIC

Josh M Swider

Josh Swider
Lab Director, Managing Partner
11/14/2023

Confident Cannabis
All Rights Reserved
support@confidentcannabis.com
(866) 506-5866
www.confidentcannabis.com



This product has been tested by Infinite Chemical Analysis, LLC using valid testing methodologies and a quality system as required by state law. All LQC samples were performed and met the prescribed acceptance criteria in 16 CCR section 15730, pursuant to 16 CCR section 15726(e)(13). Values reported relate only to the product tested. Infinite Chemical Analysis, LLC makes no claims as to the efficacy, safety or other risks associated with any detected or non-detected levels of any compounds reported herein. This Certificate shall not be reproduced except in full, without the written approval of Infinite Chemical Analysis, LLC.



Certificate of Analysis

QA SAMPLE - INFORMATIONAL ONLY

2 of 3

ICAL ID: 20231110-057
Sample: CA231110-033-110
Trop Cherry
Strain: Trop Cherry
Category: Plant
Type: Flower - Cured

Urb
Lic. #
5511 95th Ave, Kenosha, WI, 53144
Kenosha, WI 53144
Lic. #

Batch#: 233-3
Batch Size Collected:
Total Batch Size:
Collected: 11/14/2023; Received: 11/14/2023
Completed: 11/14/2023

Residual Solvent Analysis

Category 1	LOQ	LOD	Limit	Status	Category 2	LOQ	LOD	Limit	Status	Category 2	LOQ	LOD	Limit	Status
------------	-----	-----	-------	--------	------------	-----	-----	-------	--------	------------	-----	-----	-------	--------

NR= Not Reported (no analysis was performed), ND= Not Detected (the concentration is less then the Limit of Detection (LOD)). Analytical instrumentation used: HS-GC-MS; samples analyzed according to SOP RS-INST-003.

Heavy Metal Screening

	LOQ	LOD	Limit	Status
--	-----	-----	-------	--------

NR= Not Reported (no analysis was performed), ND= Not Detected (the concentration is less then the Limit of Detection (LOD)). Analytical instrumentation used: ICP-MS; samples analyzed according to SOP HM-INST-003.

Microbiological Screening

	Limit	Result	Status
--	-------	--------	--------

ND=Not Detected. Analytical instrumentation used:qPCR; samples analyzed according to SOP MICRO-INST-001.



Infinite Chemical Analysis Labs
8312 Miramar Mall
San Diego, CA
(858) 623-2740
www.infiniteCAL.com
Lic# C8-000047-LIC

Josh M Swider

Josh Swider
Lab Director, Managing Partner
11/14/2023

Confident Cannabis
All Rights Reserved
support@confidentcannabis.com
(866) 506-5866
www.confidentcannabis.com



This product has been tested by Infinite Chemical Analysis, LLC using valid testing methodologies and a quality system as required by state law. All LQC samples were performed and met the prescribed acceptance criteria in 16 CCR section 15730, pursuant to 16 CCR section 15726(e)(13). Values reported relate only to the product tested. Infinite Chemical Analysis, LLC makes no claims as to the efficacy, safety or other risks associated with any detected or non-detected levels of any compounds reported herein. This Certificate shall not be reproduced except in full, without the written approval of Infinite Chemical Analysis, LLC.



Certificate of Analysis

QA SAMPLE - INFORMATIONAL ONLY

3 of 3

ICAL ID: 20231110-057
Sample: CA231110-033-110
Trop Cherry
Strain: Trop Cherry
Category: Plant
Type: Flower - Cured

Urb
Lic. #
5511 95th Ave, Kenosha, WI, 53144
Kenosha, WI 53144
Lic. #

Batch#: 233-3
Batch Size Collected:
Total Batch Size:
Collected: 11/14/2023; Received: 11/14/2023
Completed: 11/14/2023

Chemical Residue Screening

Category 1	LOQ	LOD	Status	Mycotoxins	LOQ	LOD	Limit	Status
------------	-----	-----	--------	------------	-----	-----	-------	--------

Category 2	LOQ	LOD	Limit	Status	Category 2	LOQ	LOD	Limit	Status
------------	-----	-----	-------	--------	------------	-----	-----	-------	--------

Other Analyte(s):

NR= Not Reported (no analysis was performed), ND= Not Detected (the concentration is less than the Limit of Detection (LOD)). Analytical instrumentation used: LC-MS-MS & GC-MS-MS; samples analyzed according to SOPs PESTMYCO-LC-INST-004 and PEST-GC-INST-003.



Infinite Chemical Analysis Labs
8312 Miramar Mall
San Diego, CA
(858) 623-2740
www.infiniteCAL.com
Lic# C8-0000047-LIC

Josh M Swider

Josh Swider
Lab Director, Managing Partner
11/14/2023

Confident Cannabis
All Rights Reserved
support@confidentcannabis.com
(866) 506-5866
www.confidentcannabis.com



This product has been tested by Infinite Chemical Analysis, LLC using valid testing methodologies and a quality system as required by state law. All LQC samples were performed and met the prescribed acceptance criteria in 16 CCR section 15730, pursuant to 16 CCR section 15726(e)(13). Values reported relate only to the product tested. Infinite Chemical Analysis, LLC makes no claims as to the efficacy, safety or other risks associated with any detected or non-detected levels of any compounds reported herein. This Certificate shall not be reproduced except in full, without the written approval of Infinite Chemical Analysis, LLC.



Certificate of Analysis

QA SAMPLE - INFORMATIONAL ONLY

1 of 3

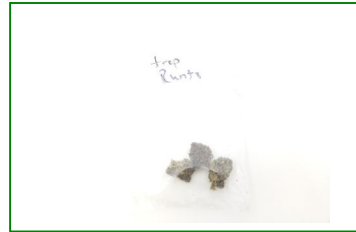
ICAL ID: 20231116-039
Sample: CA231116-007-035
Trop Runtz
Strain: Trop Runtz
Category: Plant
Type: Flower - Cured

Urb
Lic. #
5511 95th Ave, Kenosha, WI, 53144
Kenosha, WI 53144
Lic. #

Batch#: 233-2
Batch Size Collected:
Total Batch Size:
Collected: 11/20/2023; Received: 11/20/2023
Completed: 11/20/2023

Moisture 10.0% Water Activity NT	Total THC 17.58%	Total CBD <1 mg/g	Total Cannabinoids 18.16%	Total Terpenes NT
--	----------------------------	--------------------------------	-------------------------------------	----------------------

Summary	SOP Used	Date Tested	Complete
Batch	POT-PREP-003 High	11/17/2023	Complete
Cannabinoids	MOISTURE-001	11/17/2023	10.0%
Moisture			



Scan to see results

Cannabinoid Profile

Analyte	LOQ (mg/g)	LOD (mg/g)	%	mg/g	Analyte	LOQ (mg/g)	LOD (mg/g)	%	mg/g
THCa	0.3039	0.1013	19.81	198.1	CBGa	0.2948	0.0983	0.56	5.6
Δ9-THC	0.2210	0.0737	0.20	2.0	CBG	0.1890	0.0630	0.09	0.9
Δ8-THC	0.1343	0.0448	ND	ND	CBN	0.1890	0.0630	ND	ND
THCV	0.1021	0.0340	ND	ND	Total THC			17.58	175.80
CBDa	0.3993	0.1331	<LOQ	<LOQ	Total CBD			<LOQ	<1
CBD	0.1674	0.0558	ND	ND	Total			18.16	181.60
CBDV	0.1327	0.0442	ND	ND					
CBC	0.5463	0.1821	ND	ND					

Total THC=THCa * 0.877 + d9-THC + d8-THC + d8-THC; Total CBD = CBDa * 0.877 + CBD. LOD= Limit of Detection, LOQ= Limit of Quantitation, ND= Not Detected, NR= Not Reported. Potency is reported on a dry weight basis. Instrumentation and analysis SOPs used: Cannabinoids:UHPLC-DAD(POT-INST-005),Moisture:Moisture Analyzer(MOISTURE-001),Water Activity:Water Activity Meter(WA-INST-002), Foreign Material:Microscope(FOREIGN-001). Density measured at 19-24 °C, Water Activity measured at 0-90% RH. All QA submitted by the client, All CA State Compliance sampled using SAMPL-SOP-001.

Terpene Profile

Analyte	LOQ (mg/g)	LOD (mg/g)	%	mg/g	Analyte	LOQ (mg/g)	LOD (mg/g)	%	mg/g
---------	------------	------------	---	------	---------	------------	------------	---	------

NR= Not Reported (no analysis was performed), ND= Not Detected (the concentration is less than the Limit of Detection (LOD)). Analytical instrumentation used: HS-GC-MS; samples analyzed according to SOP TERP-INST-003.



Infinite Chemical Analysis Labs
8312 Miramar Mall
San Diego, CA
(858) 623-2740
www.infiniteCAL.com
Lic# C8-000047-LIC

Josh M Swider

Josh Swider
Lab Director, Managing Partner
11/20/2023

Confident LIMS
All Rights Reserved
coa.support@confidentlims.com
(866) 506-5866
www.confidentlims.com



This product has been tested by Infinite Chemical Analysis, LLC using valid testing methodologies and a quality system as required by state law. All LQC samples were performed and met the prescribed acceptance criteria in 16 CCR section 15730, pursuant to 16 CCR section 15726(e)(13). Values reported relate only to the product tested. Infinite Chemical Analysis, LLC makes no claims as to the efficacy, safety or other risks associated with any detected or non-detected levels of any compounds reported herein. This Certificate shall not be reproduced except in full, without the written approval of Infinite Chemical Analysis, LLC.



Certificate of Analysis

QA SAMPLE - INFORMATIONAL ONLY

2 of 3

ICAL ID: 20231116-039
Sample: CA231116-007-035
Trop Runtz
Strain: Trop Runtz
Category: Plant
Type: Flower - Cured

Urb
Lic. #
5511 95th Ave, Kenosha, WI, 53144
Kenosha, WI 53144
Lic. #

Batch#: 233-2
Batch Size Collected:
Total Batch Size:
Collected: 11/20/2023; Received: 11/20/2023
Completed: 11/20/2023

Residual Solvent Analysis

Category 1	LOQ	LOD	Limit	Status	Category 2	LOQ	LOD	Limit	Status	Category 2	LOQ	LOD	Limit	Status
------------	-----	-----	-------	--------	------------	-----	-----	-------	--------	------------	-----	-----	-------	--------

NR= Not Reported (no analysis was performed), ND= Not Detected (the concentration is less then the Limit of Detection (LOD)). Analytical instrumentation used: HS-GC-MS; samples analyzed according to SOP RS-INST-003.

Heavy Metal Screening

	LOQ	LOD	Limit	Status
--	-----	-----	-------	--------

NR= Not Reported (no analysis was performed), ND= Not Detected (the concentration is less then the Limit of Detection (LOD)). Analytical instrumentation used: ICP-MS; samples analyzed according to SOP HM-INST-003.

Microbiological Screening

	Limit	Result	Status
--	-------	--------	--------

ND=Not Detected. Analytical instrumentation used:qPCR; samples analyzed according to SOP MICRO-INST-001.



Infinite Chemical Analysis Labs
8312 Miramar Mall
San Diego, CA
(858) 623-2740
www.infiniteCAL.com
Lic# C8-000047-LIC

Josh M Swider

Josh Swider
Lab Director, Managing Partner
11/20/2023

Confident LIMS
All Rights Reserved
coa.support@confidentlims.com
(866) 506-5866
www.confidentlims.com



This product has been tested by Infinite Chemical Analysis, LLC using valid testing methodologies and a quality system as required by state law. All LQC samples were performed and met the prescribed acceptance criteria in 16 CCR section 15730, pursuant to 16 CCR section 15726(e)(13). Values reported relate only to the product tested. Infinite Chemical Analysis, LLC makes no claims as to the efficacy, safety or other risks associated with any detected or non-detected levels of any compounds reported herein. This Certificate shall not be reproduced except in full, without the written approval of Infinite Chemical Analysis, LLC.



Certificate of Analysis

QA SAMPLE - INFORMATIONAL ONLY

3 of 3

ICAL ID: 20231116-039
Sample: CA231116-007-035
Trop Runtz
Strain: Trop Runtz
Category: Plant
Type: Flower - Cured

Urb
Lic. #
5511 95th Ave, Kenosha, WI, 53144
Kenosha, WI 53144
Lic. #

Batch#: 233-2
Batch Size Collected:
Total Batch Size:
Collected: 11/20/2023; Received: 11/20/2023
Completed: 11/20/2023

Chemical Residue Screening

Category 1	LOQ	LOD	Status	Mycotoxins	LOQ	LOD	Limit	Status
------------	-----	-----	--------	------------	-----	-----	-------	--------

Category 2	LOQ	LOD	Limit	Status	Category 2	LOQ	LOD	Limit	Status
------------	-----	-----	-------	--------	------------	-----	-----	-------	--------

Other Analyte(s):

NR= Not Reported (no analysis was performed), ND= Not Detected (the concentration is less than the Limit of Detection (LOD)). Analytical instrumentation used: LC-MS-MS & GC-MS-MS; samples analyzed according to SOPs PESTMYCO-LC-INST-004 and PEST-GC-INST-003.



Infinite Chemical Analysis Labs
8312 Miramar Mall
San Diego, CA
(858) 623-2740
www.infiniteCAL.com
Lic# C8-0000047-LIC

Josh M Swider

Josh Swider
Lab Director, Managing Partner
11/20/2023

Confident LIMS
All Rights Reserved
coa.support@confidentlims.com
(866) 506-5866
www.confidentlims.com



This product has been tested by Infinite Chemical Analysis, LLC using valid testing methodologies and a quality system as required by state law. All LQC samples were performed and met the prescribed acceptance criteria in 16 CCR section 15730, pursuant to 16 CCR section 15726(e)(13). Values reported relate only to the product tested. Infinite Chemical Analysis, LLC makes no claims as to the efficacy, safety or other risks associated with any detected or non-detected levels of any compounds reported herein. This Certificate shall not be reproduced except in full, without the written approval of Infinite Chemical Analysis, LLC.



Certificate of Analysis

QA SAMPLE - INFORMATIONAL ONLY

1 of 3

ICAL ID: 20231127-048
Sample: CA231127-017-062
gary jealousy
Strain: gary jealousy
Category: Plant
Type: Flower - Cured

Cabo Ella Group
Lic. #
2205 Faraday Ave
Carlsbad, CA 92008
Lic. #

Batch#: 00022
Batch Size Collected:
Total Batch Size:
Collected: 11/28/2023; Received: 11/28/2023
Completed: 11/28/2023

Moisture 8.1% Water Activity NT	Total THC 17.30%	Total CBD 0.04%	Total Cannabinoids 17.94%	Total Terpenes NT
---	----------------------------	---------------------------	-------------------------------------	----------------------

Summary	SOP Used	Date Tested	Complete
Batch	POT-PREP-003	11/28/2023	Complete
Cannabinoids	MOISTURE-001	11/28/2023	Complete
Moisture			8.1%



Scan to see results

Cannabinoid Profile

Analyte	LOQ (mg/g)	LOD (mg/g)	%	mg/g	Analyte	LOQ (mg/g)	LOD (mg/g)	%	mg/g
THCa	0.1076	0.0359	19.46	194.6	CBGa	0.1044	0.0348	0.60	6.0
Δ9-THC	0.0978	0.0261	0.23	2.3	CBG	0.0978	0.0223	0.08	0.8
Δ8-THC	0.0978	0.0158	ND	ND	CBN	0.0978	0.0223	ND	ND
THCV	0.0978	0.0121	ND	ND	Total THC			17.30	172.97
CBDa	0.1414	0.0471	0.05	0.5	Total CBD			0.04	0.41
CBD	0.0978	0.0198	ND	ND	Total			17.94	179.40
CBDV	0.0978	0.0157	ND	ND					
CBC	0.1935	0.0645	ND	ND					

Total THC=THCa * 0.877 + d9-THC + d8-THC + d8-THC; Total CBD = CBDa * 0.877 + CBD. LOD= Limit of Detection, LOQ= Limit of Quantitation, ND= Not Detected, NR= Not Reported. Potency is reported on a dry weight basis. Instrumentation and analysis SOPs used: Cannabinoids:UHPLC-DAD(POT-INST-005),Moisture:Moisture Analyzer(MOISTURE-001),Water Activity:Water Activity Meter(WA-INST-002), Foreign Material:Microscope(FOREIGN-001). Density measured at 19-24 °C, Water Activity measured at 0-90% RH. All QA submitted by the client, All CA State Compliance sampled using SAMPL-SOP-001.

Terpene Profile

Analyte	LOQ (mg/g)	LOD (mg/g)	%	mg/g	Analyte	LOQ (mg/g)	LOD (mg/g)	%	mg/g
---------	------------	------------	---	------	---------	------------	------------	---	------

NR= Not Reported (no analysis was performed), ND= Not Detected (the concentration is less than the Limit of Detection (LOD)). Analytical instrumentation used: HS-GC-MS; samples analyzed according to SOP TERP-INST-003.



Infinite Chemical Analysis Labs
8312 Miramar Mall
San Diego, CA
(858) 623-2740
www.infiniteCAL.com
Lic# C8-000047-LIC

Josh M Swider
Josh Swider
Lab Director, Managing Partner
11/28/2023

Confident LIMS
All Rights Reserved
coa.support@confidentlims.com
(866) 506-5866
www.confidentlims.com



This product has been tested by Infinite Chemical Analysis, LLC using valid testing methodologies and a quality system as required by state law. All LQC samples were performed and met the prescribed acceptance criteria in 16 CCR section 15730, pursuant to 16 CCR section 15726(e)(13). Values reported relate only to the product tested. Infinite Chemical Analysis, LLC makes no claims as to the efficacy, safety or other risks associated with any detected or non-detected levels of any compounds reported herein. This Certificate shall not be reproduced except in full, without the written approval of Infinite Chemical Analysis, LLC.



Certificate of Analysis

QA SAMPLE - INFORMATIONAL ONLY

2 of 3

ICAL ID: 20231127-048
Sample: CA231127-017-062
gary jealousy
Strain: gary jealousy
Category: Plant
Type: Flower - Cured

Cabo Ella Group
Lic. #
2205 Faraday Ave
Carlsbad, CA 92008
Lic. #

Batch#: 00022
Batch Size Collected:
Total Batch Size:
Collected: 11/28/2023; Received: 11/28/2023
Completed: 11/28/2023

Residual Solvent Analysis

Category 1	LOQ	LOD	Limit	Status	Category 2	LOQ	LOD	Limit	Status	Category 2	LOQ	LOD	Limit	Status
------------	-----	-----	-------	--------	------------	-----	-----	-------	--------	------------	-----	-----	-------	--------

NR= Not Reported (no analysis was performed), ND= Not Detected (the concentration is less then the Limit of Detection (LOD)). Analytical instrumentation used: HS-GC-MS; samples analyzed according to SOP RS-INST-003.

Heavy Metal Screening

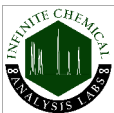
	LOQ	LOD	Limit	Status
--	-----	-----	-------	--------

NR= Not Reported (no analysis was performed), ND= Not Detected (the concentration is less then the Limit of Detection (LOD)). Analytical instrumentation used: ICP-MS; samples analyzed according to SOP HM-INST-003.

Microbiological Screening

	Limit	Result	Status
--	-------	--------	--------

ND=Not Detected. Analytical instrumentation used:qPCR; samples analyzed according to SOP MICRO-INST-001.



Infinite Chemical Analysis Labs
8312 Miramar Mall
San Diego, CA
(858) 623-2740
www.infiniteCAL.com
Lic# C8-0000047-LIC

Josh M Swider

Josh Swider
Lab Director, Managing Partner
11/28/2023

Confident LIMS
All Rights Reserved
coa.support@confidentlims.com
(866) 506-5866
www.confidentlims.com



This product has been tested by Infinite Chemical Analysis, LLC using valid testing methodologies and a quality system as required by state law. All LQC samples were performed and met the prescribed acceptance criteria in 16 CCR section 15730, pursuant to 16 CCR section 15726(e)(13). Values reported relate only to the product tested. Infinite Chemical Analysis, LLC makes no claims as to the efficacy, safety or other risks associated with any detected or non-detected levels of any compounds reported herein. This Certificate shall not be reproduced except in full, without the written approval of Infinite Chemical Analysis, LLC.



Certificate of Analysis

QA SAMPLE - INFORMATIONAL ONLY

3 of 3

ICAL ID: 20231127-048
Sample: CA231127-017-062
gary jealousy
Strain: gary jealousy
Category: Plant
Type: Flower - Cured

Cabo Ella Group
Lic. #
2205 Faraday Ave
Carlsbad, CA 92008

Lic. #

Batch#: 00022
Batch Size Collected:
Total Batch Size:
Collected: 11/28/2023; Received: 11/28/2023
Completed: 11/28/2023

Chemical Residue Screening

Category 1	LOQ	LOD	Status	Mycotoxins	LOQ	LOD	Limit	Status
------------	-----	-----	--------	------------	-----	-----	-------	--------

Category 2	LOQ	LOD	Limit	Status	Category 2	LOQ	LOD	Limit	Status
------------	-----	-----	-------	--------	------------	-----	-----	-------	--------

Other Analyte(s):

NR= Not Reported (no analysis was performed), ND= Not Detected (the concentration is less than the Limit of Detection (LOD)). Analytical instrumentation used: LC-MS-MS & GC-MS-MS; samples analyzed according to SOPs PESTMYCO-LC-INST-004 and PEST-GC-INST-003.



Infinite Chemical Analysis Labs
8312 Miramar Mall
San Diego, CA
(858) 623-2740
www.infiniteCAL.com
Lic# C8-0000047-LIC

Josh M Swider

Josh Swider
Lab Director, Managing Partner
11/28/2023

Confident LIMS
All Rights Reserved
coa.support@confidentlims.com
(866) 506-5866
www.confidentlims.com



This product has been tested by Infinite Chemical Analysis, LLC using valid testing methodologies and a quality system as required by state law. All LQC samples were performed and met the prescribed acceptance criteria in 16 CCR section 15730, pursuant to 16 CCR section 15726(e)(13). Values reported relate only to the product tested. Infinite Chemical Analysis, LLC makes no claims as to the efficacy, safety or other risks associated with any detected or non-detected levels of any compounds reported herein. This Certificate shall not be reproduced except in full, without the written approval of Infinite Chemical Analysis, LLC.